

**Imagine.  
Innovate.  
Play.  
Play.**



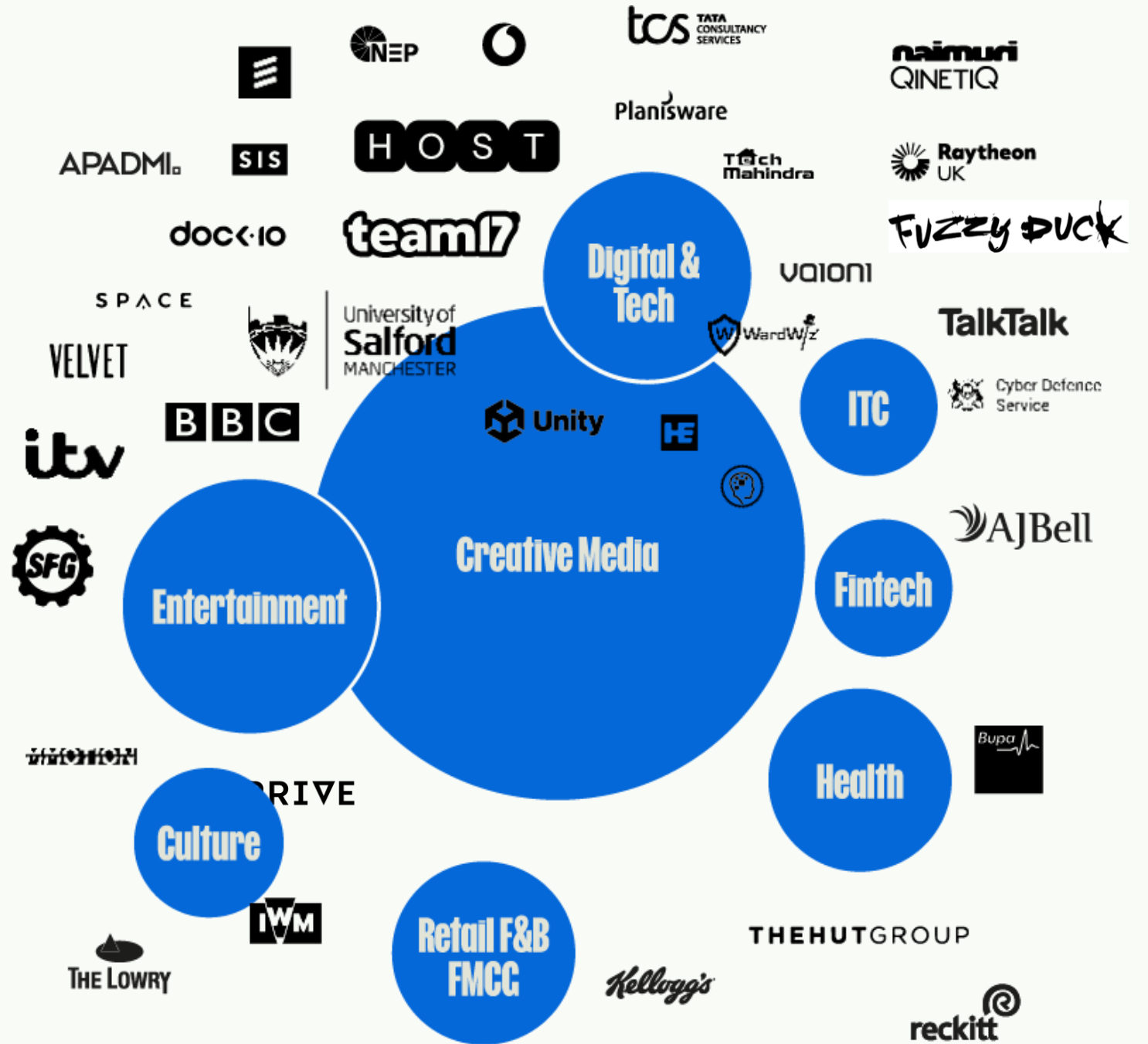
**MEDIA CITY**

**We**

**Invent the  
the  
Weekend**

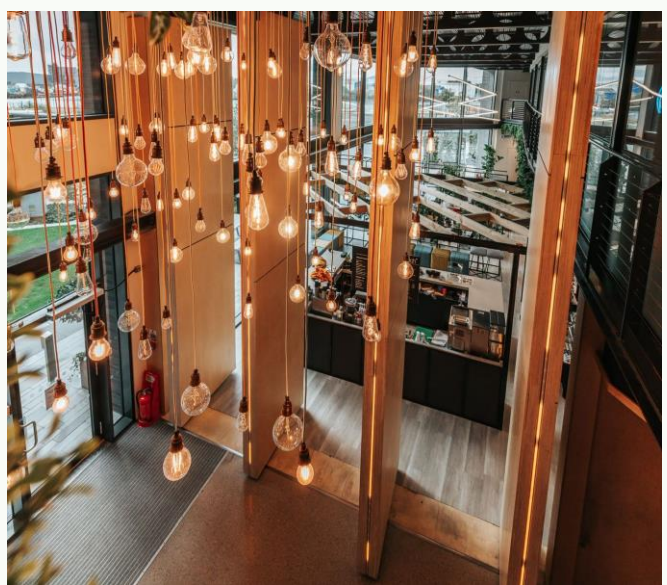
# You're in good company

MediaCity today is home to over 250 technology and media businesses.





# Expansion of ARRIVE



# More than workspace

- Best connectivity outside of London
- Easy commute
- Access to talent
- Hot bed for innovation
- Commitment to sustainability
- Unique waterside destination
- Vibrant independent food and drink scene
- A place where there's always something on



**Always  
something on**



**842,000**

annual visits to The Lowry

**326,000**

annual visits to Imperial  
War Museum North

**30**

awards

**100s of live  
TV shows**

from Match of the Day to The Voice

**1,730**

seats at the largest theatre  
stage outside the West End

**120,000**

people loved  
Van Gogh Alive

**2**

Studio tours:  
BBC and ITV



# The Place Factor

- Unique waterfront destination
- Place to breathe
- Rich cultural experience
- Vibrant and growing independent food and drink scene



# The food offer



## Great independents

Home to a stellar community of independent cafes, bars and restaurants and useful shops, we serve workers, residents and visitors alike.

### CENTRAL BAY

Our huge new destination for foodies



Award-winning coffee and cocktails at Box on the Docks

### 11 CENTRAL BY SEVEN BROTHERS

Drink, food, live music, bar games and waterside views

### SEVEN BROTHERS BREWING CO.

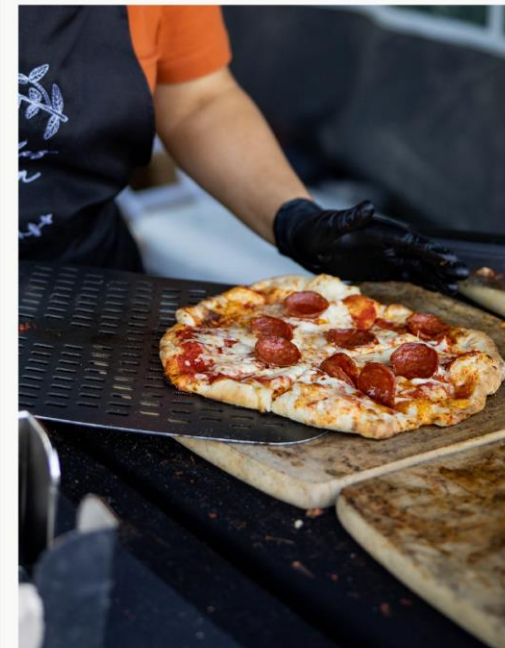
Salford-brewed pints at Seven Brothers



Global flavours food hall home to 20 independents

### sndwch<sup>h</sup> butty shop

Hand-made and home-made food to go



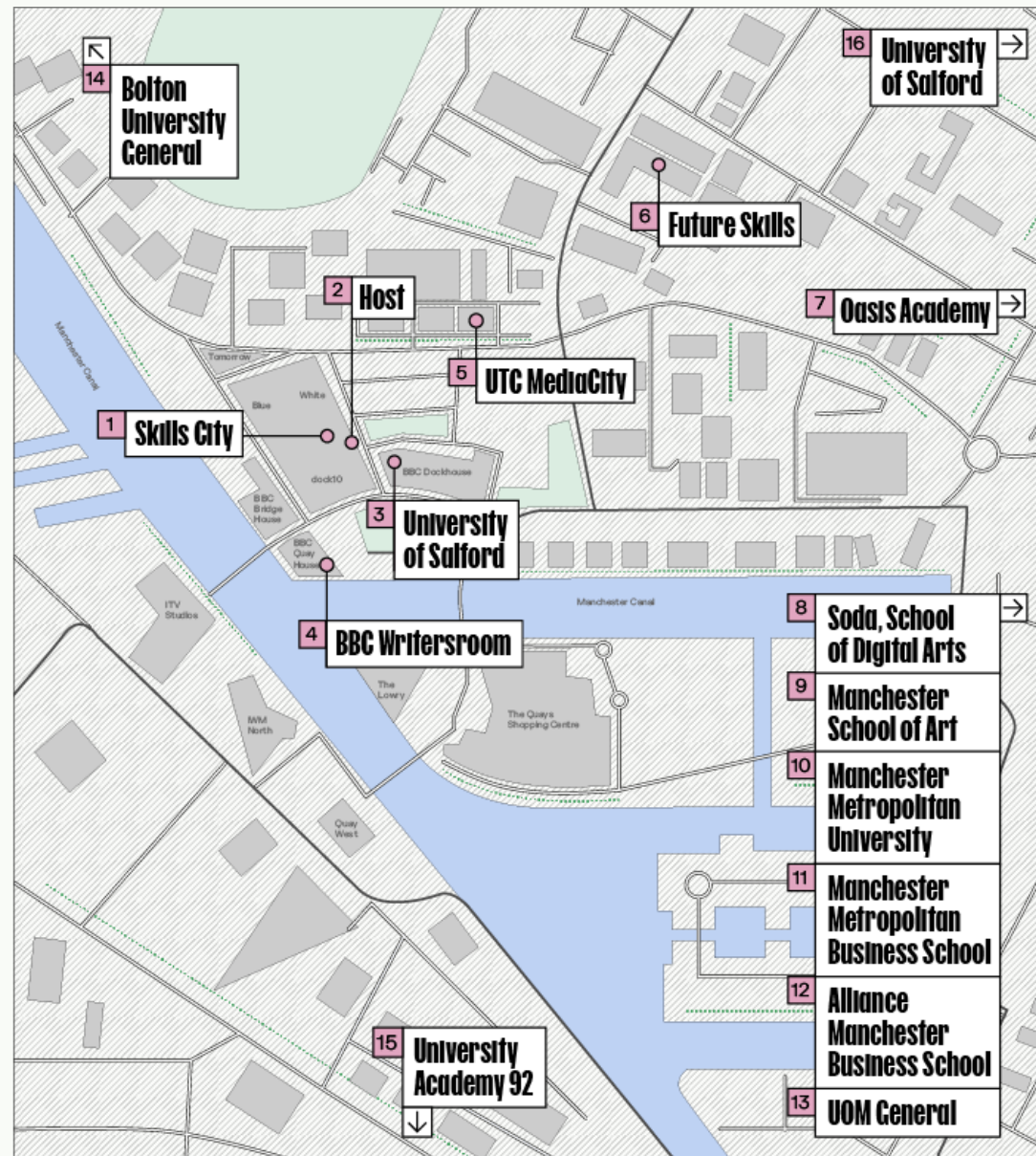
Rice n' three curries at the award-winning Chapati Café

### the MAKERS market

The best in food, drink and crafts at our monthly Makers' Market



# Homegrown talent



# The Sustainability Factor



**12%**

of workers arrived by bike, well above the MCR average of 8%

**25%**

of workers arriving by tram

**1st BREEM**

rated sustainable community in the world.

**100%**

of waste diverted from landfill

**1.4m**

Sq ft of building space that's net zero carbon

**Green Flag Award**

for our public green space

**Platinum**

Status for Cycling Score and Carbon Literacy



# The future

## Regeneration Framework

- Doubling in size spanning 23.30 ha
- Circa 75,596sqm commercial space
- Circa 3,000 new homes

## Zones clusters

- The Media Quarter
- The waterfront & Gateway
- The Living Hub
- The Culture & Community Hub

