

Tatton Estate and Tatton Group

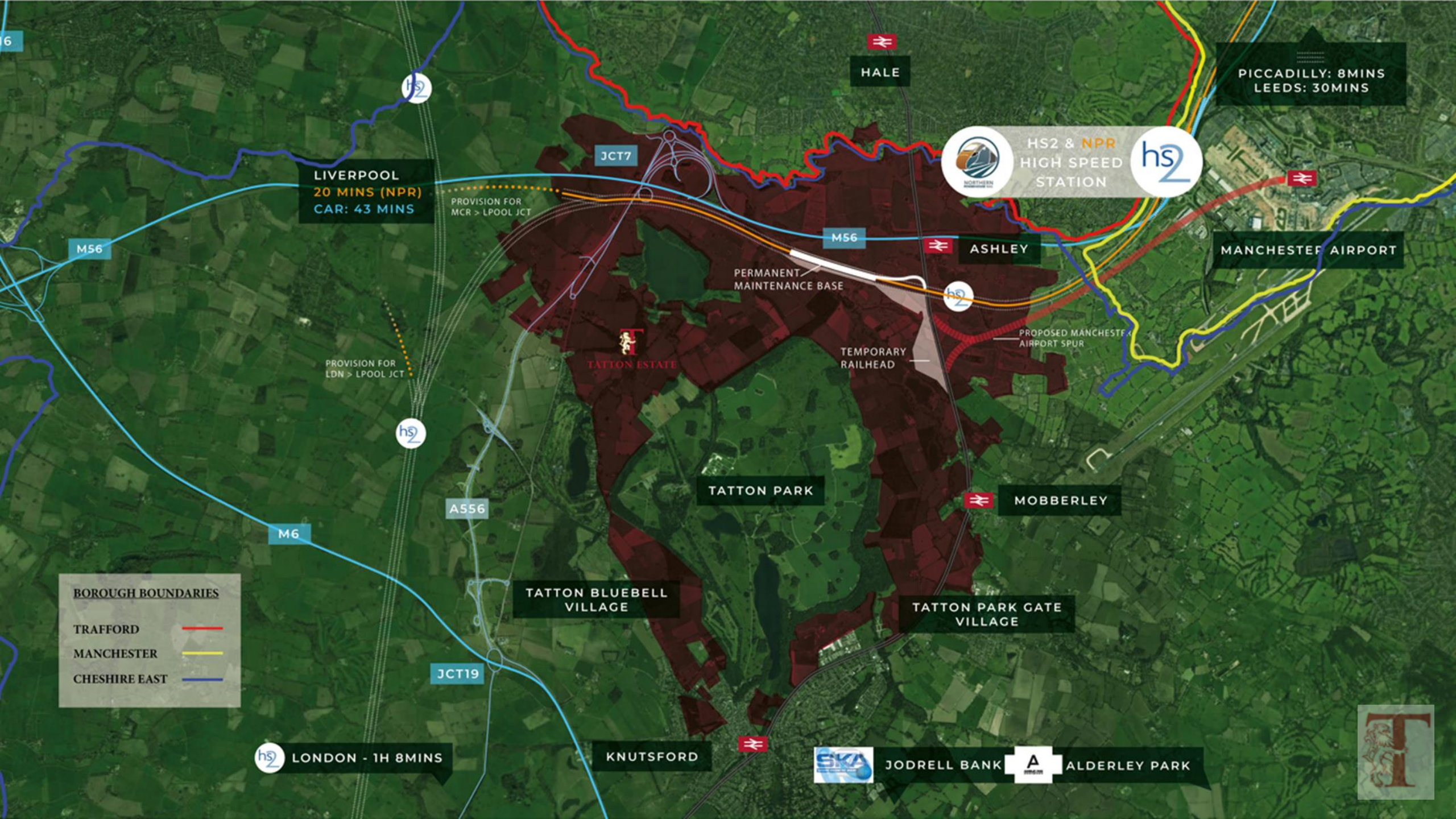
2023 - 2030+

Annette McDonald

Deputy Managing Director

Tatton Group





WHAT MAKES US TICK

BEING AN AGILE, PIONEERING, RESPONSIBLE AND SUSTAINABLE ESTATE

Agile and adaptive to create thriving diverse communities built for the future

Pioneering, sustainable and influential in how we manage our landscape and environment

Responsible custodians preserving heritage assets and our past whilst looking forward with purpose

Sustainable long-term partner, helping deliver Net Zero NW's placemaking ambitions.



CHALLENGES AND OPPORTUNITIES

NPR and HS2 – Impact and opportunity

Optimising land assets to deliver viable Natural Capital, BNG, Nutrient neutrality, Carbon sequestration and credits, - what is the landowner and commercial reality?

Planning Policy - Green Belt, LPA capacity and other constraints

Climate Change – low carbon living, climate resilience and mitigation,

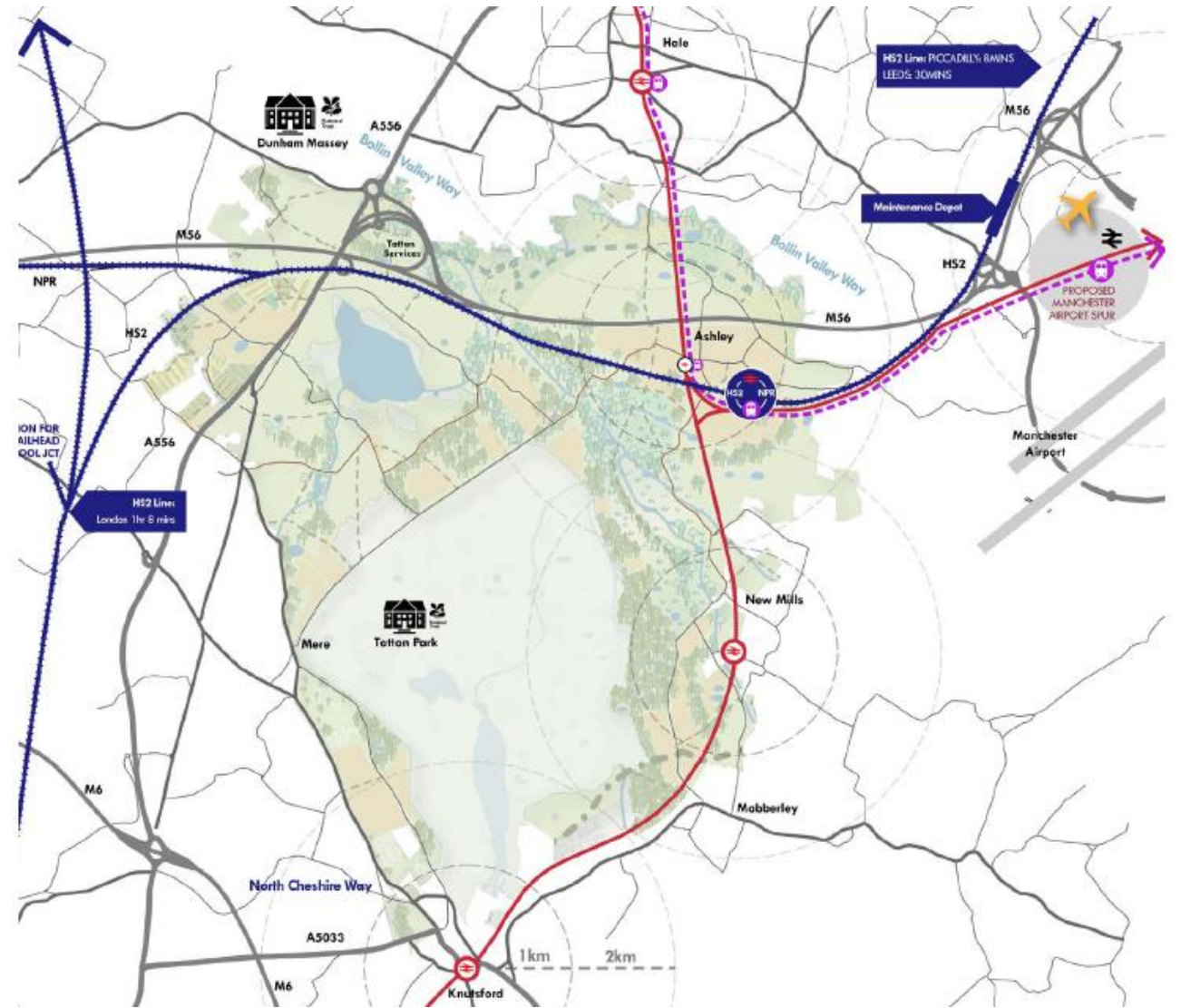
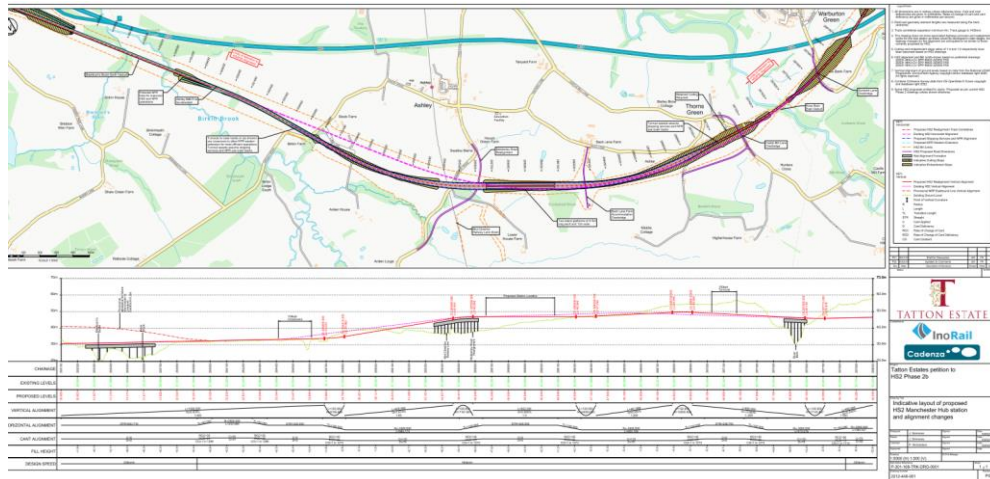
‘Rural’ communities – the original 15 minute thriving community model

Case studies - development opportunities

NPR AND HS2

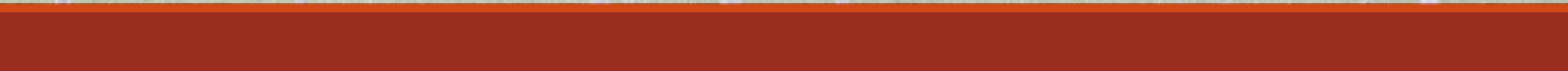
MANCHESTER AIRPORT STATION

FUTUREPROOFING THE OPPORTUNITY



CLIMATE CHANGE AND MITIGATION

<https://vimeo.com/644635798/506207d453>





PLANNING POLICY AND THE GREEN BELT

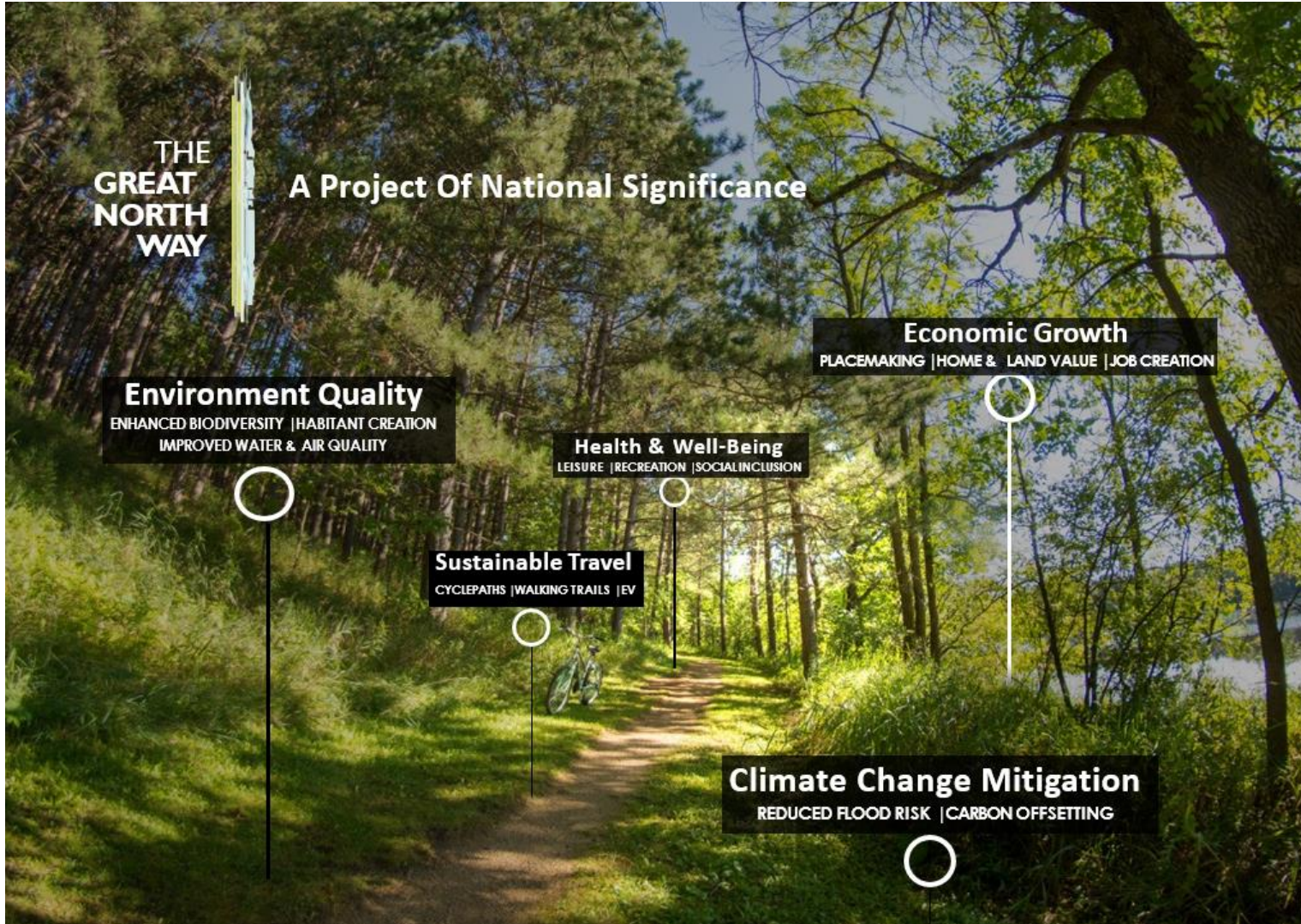
Need longer-term consensus from National Government

Uncertainty makes planning and promoting difficult

Green Belt a political policy constraining growth?

Should it be landscape led?

Resource challenges in all Local Authorities
– hard to progress to committee



CLIMATE CHANGE ADAPTATION AND MITIGATION



RURAL LIVING 2023+

THE OLDEST 20-MINUTE NEIGHBOURHOOD

The rural hinterland of a town, with its network of villages, can be a sustainable location for growth

CURRENT DEVELOPMENT PROJECTS

Parkgate Village – Knutsford (236 homes)



Bluebell Village – Knutsford (275 homes and local centre)



Tatton Services (MSA)

